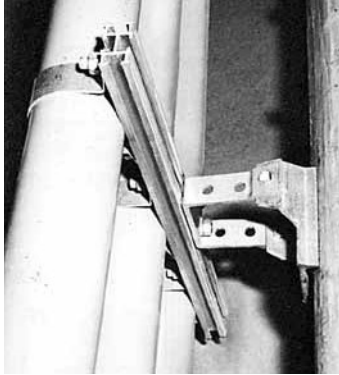


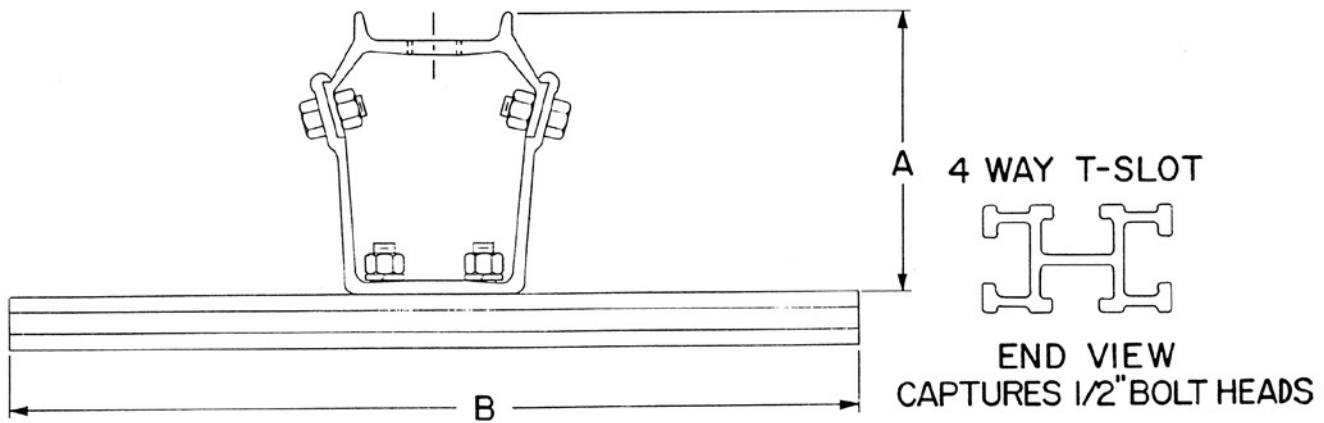
EQUIPMENT MOUNTS

Conduit Standoff Brackets

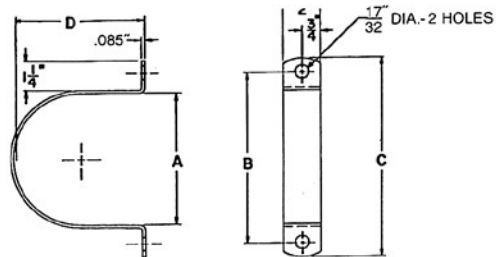


A multi-purpose bracket for mounting 1" thru 6" conduit in a variety of ways. This bracket will mount up to six 6" conduit with infinite adjustability. 4 way T-Slot extrusion eliminates field drilling. Mounts to the pole on 3⁵/₈" hole centers with 5/8" thru bolt and 1/2" lag screws (not supplied)

| Catalog Number | Product | Weight | Dimensional Data | |
|----------------|---------|--------|------------------|-----|
| | | | A | B |
| 6-CSO-12 | 51961 | 4 lbs. | 6" | 12" |
| 6-CSO-24 | 51962 | 5 lbs. | 6" | 24" |
| 6-CSO-36 | 51963 | 6 lbs. | 6" | 36" |
| 9-CSO-12 | 51964 | 4 lbs. | 6" | 12" |
| 9-CSO-24 | 51965 | 5 lbs. | 6" | 24" |
| 9-CSO-36 | 51966 | 6 lbs. | 6" | 36" |



Strap kits are available for use with the CSO system with the following variations. The straps have two holes and strap kit consists of straps, bolts, nuts, and washers for mounting one conduit section. These units can also be used with Bolt-A-Band systems to attach to steel or concrete. Contact your representative for adjustable units.



| Description | Catalog No. | Product No. | Weight | A dimension | B dimension | C dimension | D dimension |
|-------------|-------------|-------------|---------|-------------|-------------|-------------|-------------|
| 2 Inch | STK-2 | 51967 | .5 lbs. | 2 3/8" | 3 31/32" | 5 3/32" | 2 1/4" |
| 2 1/2 Inch | STK-2.5 | 51968 | .6 lbs. | 2 7/8" | 4 15/32" | 5 19/32" | 2 3/4" |
| 3 Inch | STK-3 | 51969 | .6 lbs. | 3 1/2" | 5 3/32" | 6 7/32" | 3 3/8" |
| 3 1/2 Inch | STK-3.5 | 51970 | .6 lbs. | 4" | 5 19/32" | 6 23/32" | 3 7/8" |
| 4 Inch | STK-4 | 51971 | .6 lbs. | 4 1/2" | 6 3/32" | 7 7/32" | 4 3/8" |
| 5 Inch | STK-5 | 51972 | .7 lbs. | 5 9/16" | 7 5/32" | 8 9/32" | 5 7/16" |
| 6 Inch | STK-6 | 51973 | .7 lbs. | 6 5/8" | 8 7/32" | 9 11/32" | 6 1/2" |

