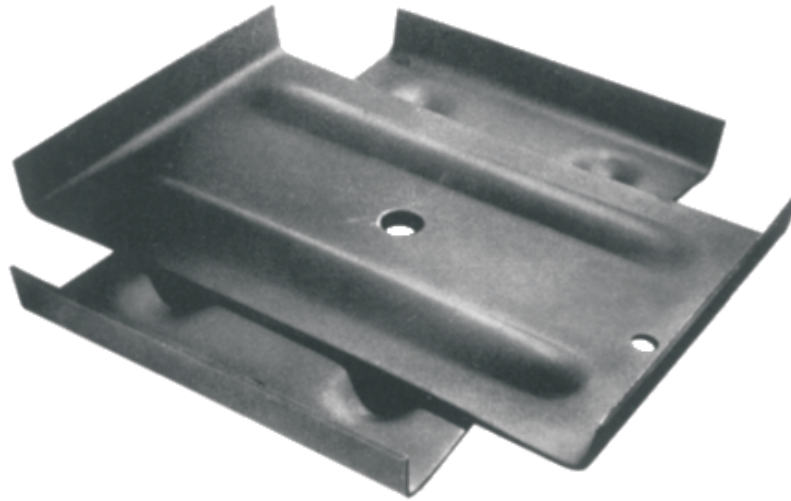


CROSS-PLATE ANCHOR (LESS ROD) BLACK ASPHALT COATED



Cross-Plate anchors are formed from structural steel and are ribbed for extra strength and reinforcement. Plate edges are flanged to resist creeping. Plates are welded at right angles for maximum holding ability. Nut retainer is provided to aid installation.

These anchors are available with high grade asphalt coating or hot dip galvanized.

CATALOG NO.	HOLE SIZE INCHES	AREA SQ.IN.	ROD SIZE INCHES	ANCHORS PER CTN.	WT. PER CTN.	Ultimate Soil Anchor Holding Strength —Pounds (No Safety Factor Included)					
						*Soil Class	3	4	5	6	7
						Soil Test Probe Value	500-600 in.-lbs.	400-500 in.-lbs.	300-400 in.-lbs.	200-300 in.-lbs.	100-200 in.-lbs.
XP16	16	150	5/8 - 3/4	6	70		26,500	22,500	18,500	14,500	9,500
XP20	20	250	5/8 - 3/4	4	65		34,000	29,000	24,000	19,000	14,000
XP20-1	20	250	1	4	65		34,000	29,000	24,000	19,000	14,000
XP24-3/4(E)	24	400	5/8 - 3/4	1	33		45,000	37,000	30,000	23,500	18,000
XP24	24	400	1	1	33		45,000	37,000	30,000	23,500	18,000
XP24-1	24	400	1 - 1/4	1	33		45,000	37,000	30,000	23,500	18,000

Add suffix G for hot dip galvanized anchors. Example: XP16G

(E) REA Electrical Approved, item Z

(T) REA Telephone Approved, item Z

*These numbers indicate type of soil: 3. Compacted clay and gravel mixed, shale, broken rock, hardpan. 4. Compacted sand, claypan, compacted gravel. 5. Loose sand, gravel and clay, compacted coarse sand. 6. Clay loam, damp clay, compacted sand fines, loose coarse sand. 7. Silt loam, loose sand fines, wet clay, miscellaneous fill.